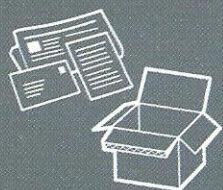


What goes where?

Putting the right things in the right containers helps us recycle more.

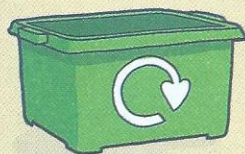
Keep me!

Paper, cardboard



Black box

Glass bottles and jars, cartons



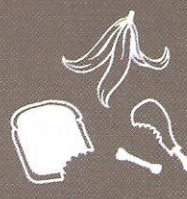
Green box

Plastic bottles, pots, tubs and trays. Tins, cans, foil, aerosols.



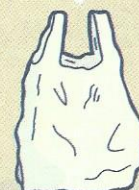
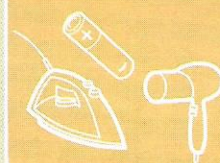
Blue bag

Food waste



Food waste bin

Small batteries, small electricals



Bag

Only things that cannot be recycled should go in your rubbish.



Clothes and shoes of good enough quality to be worn again can be recycled kerbside, in a tied bag (not black sack) to keep dry. All other clothes, shoes and textiles can go to recycling sites.

Your Recycle More collection calendar

Your collection day will be **Wednesday**

Keep me!

November 2021	3	10	17	24	
December 2021	1	8	15	22	30*
January 2022	6*	12	19	26	
February 2022	2	9	16	23	
March 2022	2	9	16	23	30
April 2022	6	13	21*	27	
May 2022	5*	11	18	25	
June 2022	1	9*	15	22	29
July 2022	6	13	20	27	
August 2022	3	10	17	24	
September 2022	1*	7	14	21	28
October 2022	5	12	19	26	

* Due to the bank holiday, your collection this week is on a different day

You will have an extra collection (of rubbish only) on **Saturday 30 October**

Your first new collection day will be **Wednesday 3 November**

Recycling week



Recycling and rubbish week

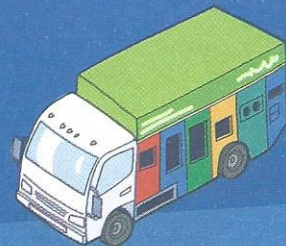


On collection day:

- ✓ Rubbish bin lid closed; no waste on top or beside it
- ✓ Recycling and rubbish out by 7am

Garden waste collections are unchanged

Most people in Somerset are recycling. We are making it easier for everyone to recycle even more and help protect your environment.



From November, you can recycle these extra items every week, along with everything you can already recycle.



Plastic pots,
tubs and trays



Food and drink
cartons and Tetra Pak



Small household
batteries



Small electrical items,
such as kettles or toasters

You will need to put your recycling in different containers, including a **Bright Blue Bag** delivered a week or two before things change. It folds flat, has a weight in its base to stop it blowing away, and a Velcro-fastened lid keeps the contents inside.

Because you can recycle more, your rubbish will be collected every three weeks.

Recycle More is already collecting hundreds of tonnes of extra recycling in Mendip and South Somerset.

Your collection day and time may change.



Please check your collection day calendar below.

What will not change?

- Garden and clinical waste collections will stay the same.
- If our crews help you with your recycling and rubbish, this will continue.

Recycle More is coming to Taunton Deane at the start of November and West Somerset and Sedgemoor next year

What plastics go in your Bright Blue Bag

YES PLEASE

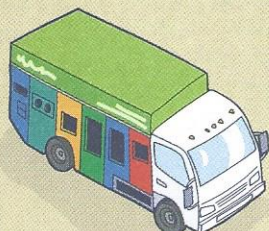
- ✓ **Plastic bottles**, such as those for milk, bleach, juice, shampoo, laundry and detergents
- ✓ **Plastic pots**, such as those for yoghurt, soup, face cream, hair gel, toiletries
- ✓ **Plastic tubs**, such as those for margarine, ice cream, laundry tablets
- ✓ **Plastic trays** – including black plastic – for meat, ready meals, plastic punnets for fruit and mushrooms, plastic egg boxes

NO THANKS

- ✗ **Thin stretchy and crinkly plastics**, such as carrier bags, food wrappings or the film from food trays and punnets
- ✗ **Other plastics**, such as plastic toys, CD cases, car parts, coat hangers, plastic paint pots, toothbrushes, toothpaste tubes, blister packs, pens, expanded polystyrene
- ✗ **Mixed materials**, such as pet food pouches and crisp packets

Some plastics are hard to recycle. If you cannot reuse or recycle the plastic we do not yet recycle, they can go in your rubbish to generate electricity via energy-from-waste.

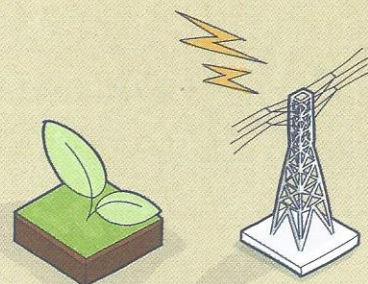
What happens to your recycling?



The crew separate the materials onto the truck



Your recycling is turned into new products and packaging



Your food waste is turned into power and farm compost

Get ready for Recycle More

Order recycling containers

Everyone can have green and black recycling boxes and food waste bins. Order new or replacement containers free of charge online or by calling your district council.

Do it online with My Waste Services

My Waste Services on the somersetwaste.gov.uk homepage is the quick and easy way to request services or report problems.

Find out more

Visit somersetwaste.gov.uk/recycle-more for more information about Recycle More and sign up for our e-newsletter.

- Contact us with My Waste Services at somersetwaste.gov.uk
- Call your district council **0300 304 8000**

If you need this information in another format, such as large print, braille or another language, please contact your district council **0300 304 8000**

Follow us on   @SomersetWaste



SCAN ME

**Look out for your
Bright Blue Bag.**

**It will be delivered
just before the
services change,
so you can
recycle more!**

